



van der Woerd
& Associates Ltd.
Consulting Engineers

Linden Woods

City of Burlington



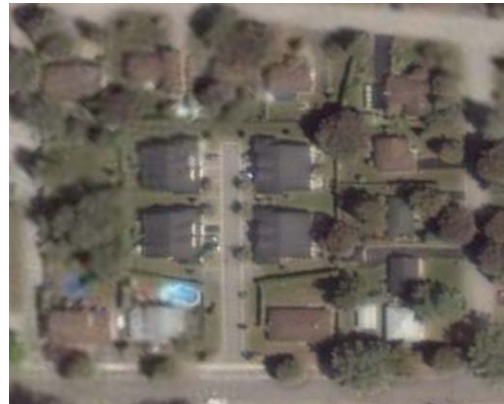
Linden Homes Limited retained van der Woerd Associates for planning, engineering and surveying services located in an established neighbourhood in Burlington.

Linden Woods is a small infill project within an established neighbourhood in Burlington consisting of eight semi-detached homes geared to retirees.

van der Woerd Associates developed the Business Plan and represented the project at City Council for rezoning resulting in success for the client, the City and the neighbours.

Services Performed:

- Feasibility Study and Business Plan
- Site Design of Building Layout
- Topographic Survey
- Engineering Design and approvals for Watermains, Sanitary Sewers and Storm Drainage
- Road Construction and Earthworks.
- Contract Preparation, Tender and Administration
- Construction Inspection and Layout Survey



Location:

581 Dynes Road, Burlington

Client

Linden Homes Limited